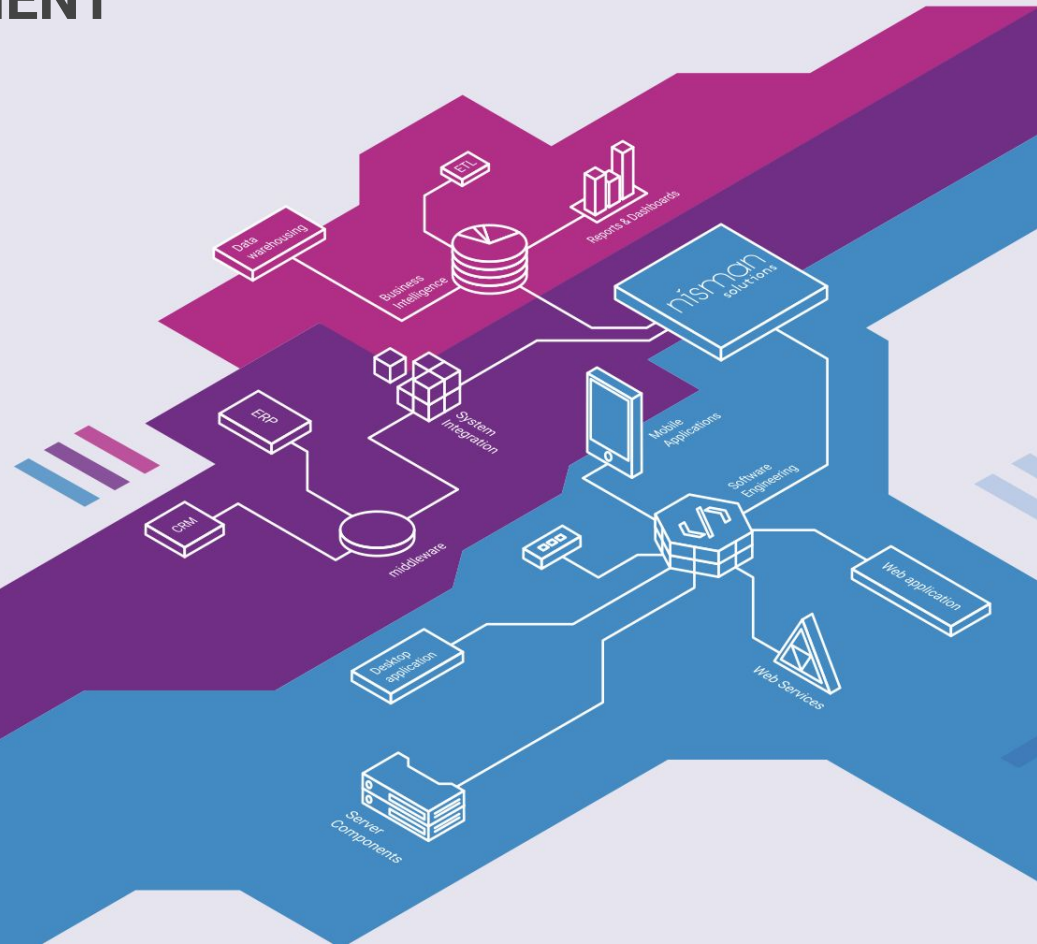


SOFTWARE CONSULTING, DESIGN & DEVELOPMENT



WHO WE ARE



Founded by Slava Nisman in 2007

- ◆ Grew into a team of passionate, software engineers and architects
- ◆ Built a process to develop thoughtful and reliable software solutions for small & mid-sized organizations
- ◆ Deep expertise in software design, cloud technologies, mobile development, enterprise integration and business intelligence
- ◆ Custom solutions crafted and implemented by software architects

A Sample of Companies We are Proud to Have Worked With

illumina®

credo

**NORTHROP
GRUMMAN**

Phone 

 **GBG**
Insurance Without Borders™

 **Apex IT**

ReveMed Technologies 
Powered by RevX


Post
UNIVERSITY®
EST. 1890

TradeService™
A TRIMBLE COMPANY

5 Key Times Our Clients Call On Us

- ◆ When they want to engineer a complete web application including:
 - BACK-END ARCHITECTURE
 - FRONT-END IMPLEMENTATION
 - INTEGRATION
 - UX DESIGN
 - MOBILE IMPLEMENTATION
 - BUSINESS INTELLIGENCE
- ◆ When they want to engineer a fully integrated mobile app that works on all platforms
- ◆ When they need to augment their in-house IT staff with experienced professionals who can hit the ground running
- ◆ When existing software needs rework, redesign, integration or performance improvements
- ◆ When they need a trusted sounding board or seasoned leadership to help them achieve their business goals

Case Study 1:

Global Benefits Group



Challenge:

[Global Benefits Group](#), already the world's largest independent provider of international benefits, was experiencing significant growth with the increase in working expatriates. They needed to improve internal processes, and decipher business data buried inside proprietary applications, so they could develop better products and keep up with their expanding customer base.

Solution:

GBG turned to Nisman Solutions to develop a Data Warehouse and dashboards to give their executive team a 360-degree view of the business. Nisman Solutions also developed a Content Management System (CMS) to archive reports and financial data.

Result:

The project allowed **GBG** to overcome the complexity and opacity of its legacy systems and get the tools it needed to manage and capitalize on its growth. Our work empowered regional managers around the world to measure and analyze the profitability of products in real time, giving them an intelligence edge over both local and global competitors.

Case Study 2:

Illumina DNA Sequencing



Challenge:

Illumina is a leading provider of technology for analyzing the human genome. Its high-volume, cutting-edge sequencing machines are key to efforts researching genetic patterns among millions of people that could reveal the causes of various diseases. **Illumina's systems** had reduced the sequencing of DNA to two weeks. But when issues arose during sequencing, **Illumina** was not able to identify them until the two-week testing cycle was complete, forcing them to repeat the entire sequencing process.

Solution:

Illumina turned to Nisman Solutions to design and build a Business Intelligence solution that allowed **Illumina's data scientists** to interpret signs of trouble at any point during the sequencing process.

Thinking outside the box, Nisman was able to consolidate large data sets from multiple sources and organize them using the Amazon Cloud and Amazon Elastic MapReduce (EMR) services, to process data at scale.

Result:

The solution allowed **Illumina** to find early signals of issues without having to wait for the two week testing period to finish. This allowed them to reset much faster, saving vital time, millions of dollars and possibly many lives.

What Our Clients Say



"We brought in Nisman Solutions because we had an acute need to integrate complex, disparate data sources on a tight timeline and did not have the resources in house. Slava did a great job of taking my vague requirements and turning them into workable solutions, including proposing new methods and getting them up and running. We use these tools on a daily basis."

Chris MacDonald, Senior Engineer, Product Engineering, **Illumina**

"Our project was completed in a remarkably short amount of time, with no hiccups, problems, surprises and within our budget! We appreciated Nisman Solutions' broad array of technology expertise and a focus on solutions."

Clay Tyler, Chief Information Officer, **GiveBack360, Inc.**

"Slava has the ability to see the big picture... When there is a particularly difficult problem where an outside view would be beneficial, I turn to Slava first. Any team would be enhanced by having Slava Nisman on board."

Mark Joseph Horninger, Senior Software Engineer - **Northrop Grumman Corporation**

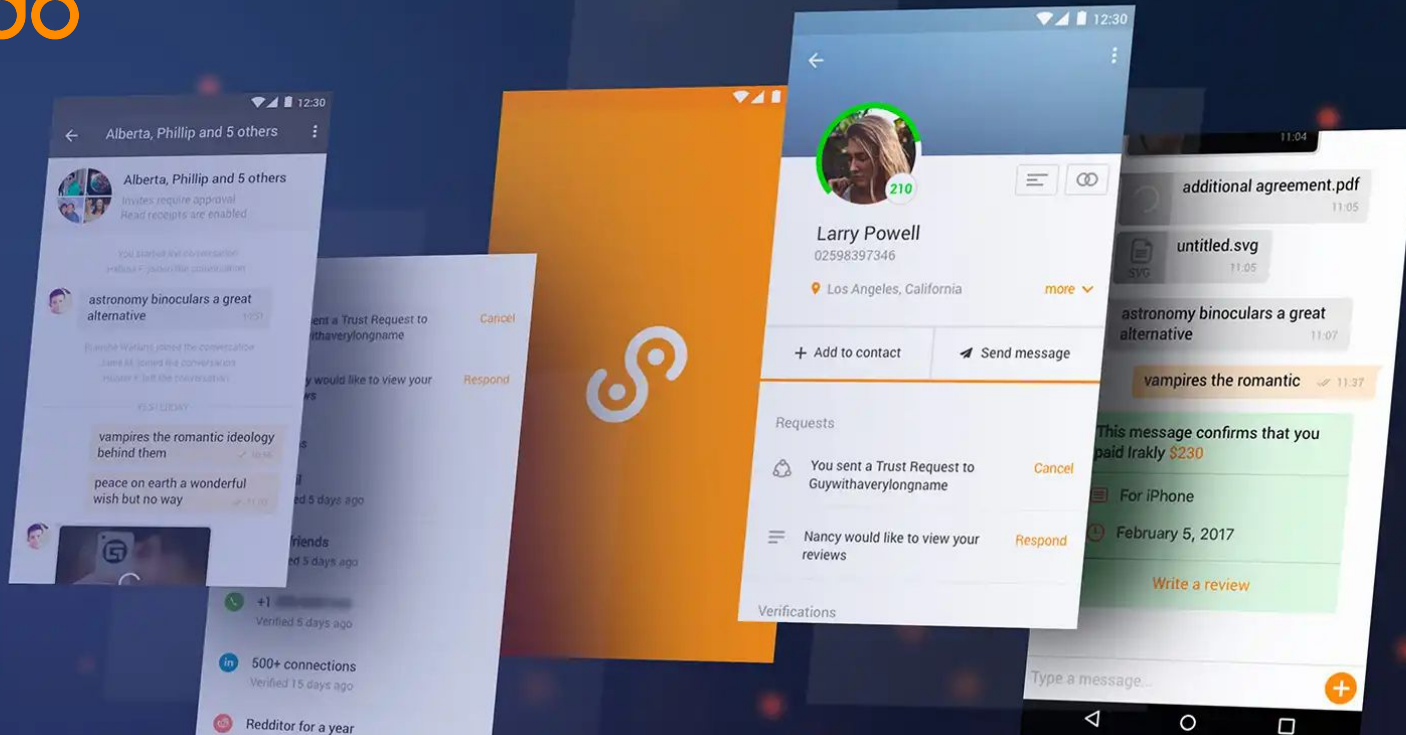
Our work



Credo360 is a place where you can safely deal
with people you don't know

www.credo360.com

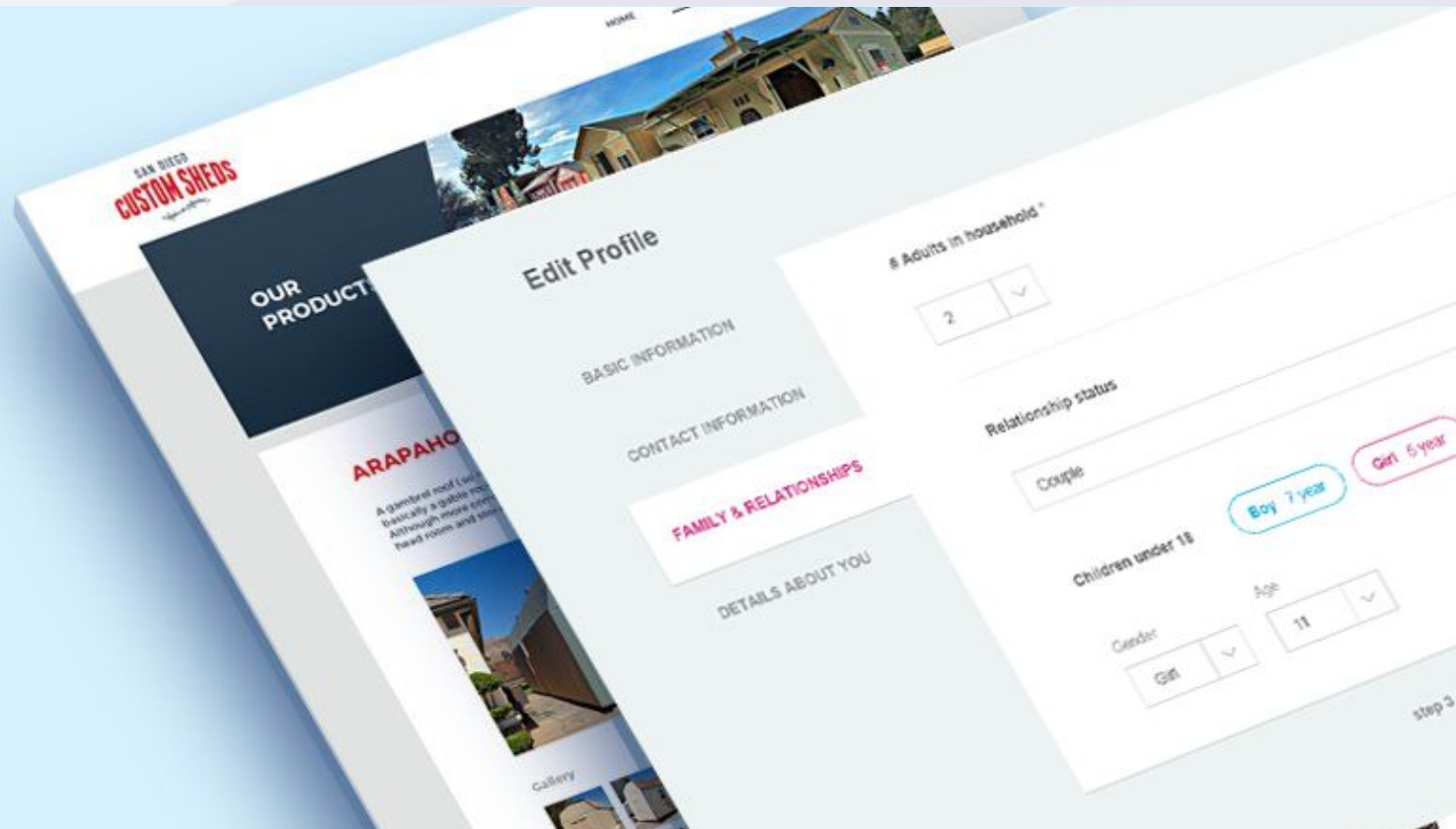
credo



Our work

eCommerce web application for
San Diego Custom Sheds

www.sandiegocustomsheds.com



Our work

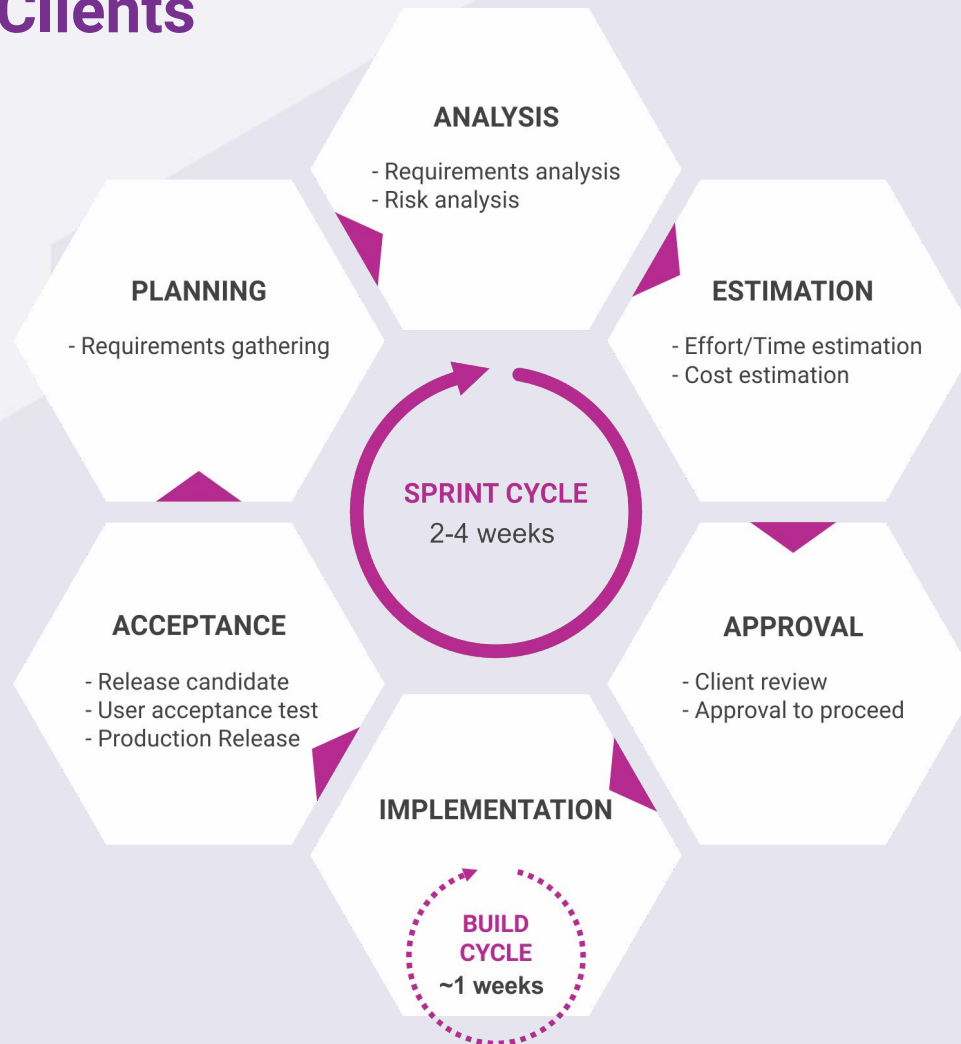


Global Benefits Group is the largest independent, fully integrated provider of international benefits in the world

www.bgb.com



How We Work With Our Clients



Areas of Core Expertise

- ◆ **Systems Analysis and Design**
- ◆ **Software Engineering**
- ◆ **Mobile Apps for iOS / Android (Xamarin)**
- ◆ **Enterprise Integration**
- ◆ **Business Intelligence** (ETL, Data Warehousing, Reports and Dashboards)
- ◆ **SQL and Big Data Technologies** (Sql Server, PostgreSQL, Hadoop)
- ◆ **Cloud Technologies** (AWS)
- ◆ **Microsoft.Net** (C#, DevExpress, XAF)
- ◆ **Leadership of Software Development Teams**

Specific Services Nisman Solutions Provides



**Architecture
and Design**



**IT
Consulting**



**Web
Applications**



**Web Services
(API)**



**Mobile App
development**



**Desktop
Applications**



Integration



**ETL (Extract, Transform
and Load)**



**Data
Warehousing**



**Reports and
Dashboards**



Leadership

Why Us



- ◆ Over 10 years in business and unmatched domain expertise
- ◆ Seasoned, professional and enthusiastic team of engineers and architects committed to quality
- ◆ Strategic thinking to design the most innovative solutions plus the technical expertise to implement them
- ◆ Well established process and practices to consistently deliver thoughtful and reliable solutions for small & mid-sized organizations
- ◆ Proven track record of delivering on-time and on-budget
- ◆ Ability to work with your current in-house team, or independently

Representative Industry Experience

- ◆ Biotechnology
- ◆ Insurance
- ◆ Defense
- ◆ Life Sciences
- ◆ Information Technology
- ◆ Consulting
- ◆ Healthcare
- ◆ Higher Education
- ◆ Telecom
- ◆ Marketing and Sales
- ◆ CRM

Our Leadership Team



Andrew Shaker

Andrew is an entrepreneur with a background in digital advertising and telecom, based out of Orange County, California. Andrew has established a track record of project management and bringing-to-market a diverse range of products such as enterprise ad servers, messaging applications and sports data platforms (live sports betting).

He specializes in working with client-facing teams such as sales, business development, marketing and customer service.

Contact:

andrew@nismansolutions.com
(949) 525-4338

Our Leadership Team



Ala Mushal

Ala Mushal is a talented software architect and technology leader leveraging 20+ years of experience with primary discipline in Microsoft technologies. He is an inspiring engineer with a proven ability to jump into new projects, lead teams to project completion, provide technical direction and advance quickly.

Through his forward thinking and focus on delivering cutting-edge quality software products and services, Ala has become an invaluable resource. His vast knowledge in his field has made him a point of contact for executives, directors, managers and peers.

Contact:

ala@nismansolutions.com
(858) 231-3526

Our Leadership Team



Slava Nisman

Slava is a software architect, consultant, and founder of Nisman Solutions, engineering custom software since 2000 for organizations like Illumina, Northrop Grumman, Apex IT and Global Benefits Group.

After personally building commercial and enterprise software for a wide range of companies, Slava now leads a team of experienced, passionate and professional engineers and architects delivering custom software design and development for small to midsize companies in BioTech, Insurance, Defense, Higher Ed. and High Tech.

Contact:

slava@nismansolutions.com
(619) 630-7528

Let's talk

4275 Executive Square, Suite 200,
La Jolla, California 92037

(619) 630-7528

hello@nismansolutions.com

<http://nismansolutions.com>

