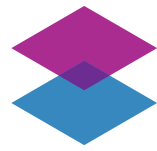


nisman  
solutions



## INFORMATION TECHNOLOGY FOR GREAT ORGANIZATIONS

# YOUR NEXT GREAT SOLUTION STARTS HERE

Our work together begins with a customized and thoughtful design process and continues with carefully planned no-nonsense implementation, thorough quality assurance and training, leading to a stress free launch every time.

☎ 619-630-7528

✉ [contact@nismansolutions.com](mailto:contact@nismansolutions.com)

🌐 [www.nismansolutions.com](http://www.nismansolutions.com)

📍 4275 Executive Square #200,  
La Jolla, CA 92037



## WHO WE ARE

Nisman solutions is a Software Engineering and Information Technology firm built and managed by software architects. Our team is dedicated to serving our clients with truly custom technology based on high-level strategy, thoughtful design and close collaboration with you. This strategic, holistic approach allows us to consistently deliver Scalable Solutions built with proven and reliable technology according to Best Industry Practices.

## OUR TEAM



**Igor**

Sr. Software Engineer



**Dmytro**

Software Engineer



**Ivan**

Mobile Developer



**Jonathan**

Software Architect



**Ala**

Software Architect



**Stacy**

Marketing Manager



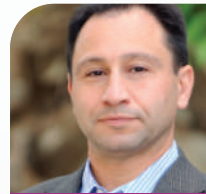
**Lenny**

Project manager



**Dimitry**

Project manager



**Slava**

Founder & Chief Architect



**Bohdan**

Front-end developer



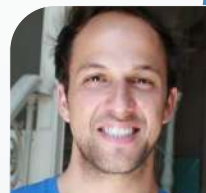
**Stas**

Graphic Designer



**Robert**

Creative Director



**Andrew**

Client's Relations

"The build phase was predictable, on-time and of excellent quality. The result was a well working integration"

– Eric Steege, President and CEO at Blue Flame CRM

# ULTIMATE TOOLS FOR EXPERT SOLUTIONS



## SERVICES SPOTLIGHT

### • SOFTWARE ENGINEERING

We help create visually stunning and fully functional user experiences whether your new or optimized application resides on the desktop, in the web or on any mobile platform. No matter how complex the business model, no matter what programming language, whether you need to harness server power, to get the result you want, Nisman has the vision and skills to engineer your perfect solution.

- Desktop/web applications
- Web services
- Mobile applications
- Server components

- Application integration
- Enterprise integration (ESB)
- CRM integration
- Middleware

### • SYSTEMS INTEGRATION

The more great technology you deploy, the more likely it is that some of it will not talk to each other the way you wish it would. We take your favorite “what ifs” and make them realities, maximizing the functionality, power and ultimately the return on your investment. Using Salesforce, Oracle CRM-On-Demand, Middleware and more, we make your systems a coherent whole that adds up to more than the sum of its parts.

### • BUSINESS INTELLIGENCE

Because your decisions are only as good as your data, Nisman architects solutions to mine and interpret vast quantities of data from disparate sources, giving you the insights that let you allocate resources more effectively, contact prospects faster and be more nimble and proactive. We give you cutting-edge reporting and dashboards to have complete visibility and control over your enterprise.

- Data warehousing
- Big Data
- Extract Transform Load (ETL)
- Reports and dashboards

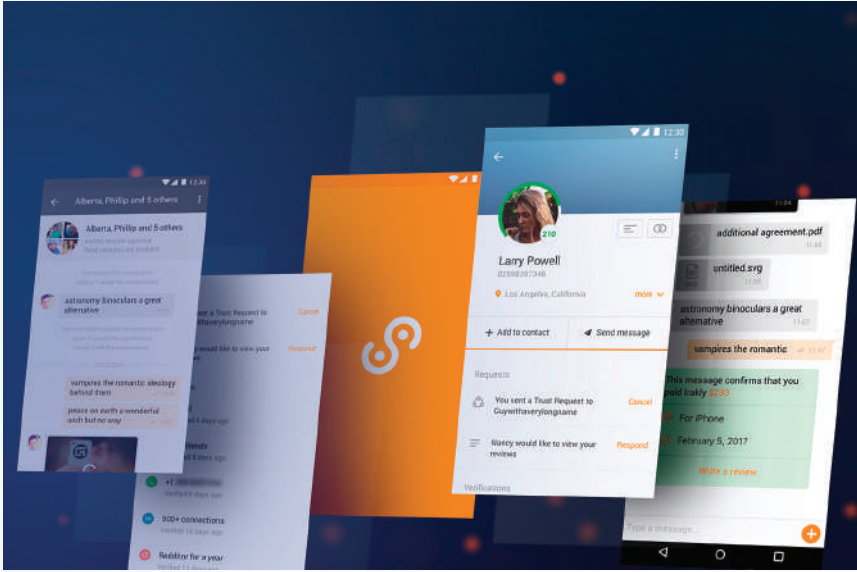
"Nisman Solutions team jumps in, quickly understands the business need, architects the solution and mentors the team that builds it"

– Chris Armstrong

Vice President - Delivery at Apex IT

Don't see what you need here? We are here to help: 619-630-7528

## OUR WORK



credo

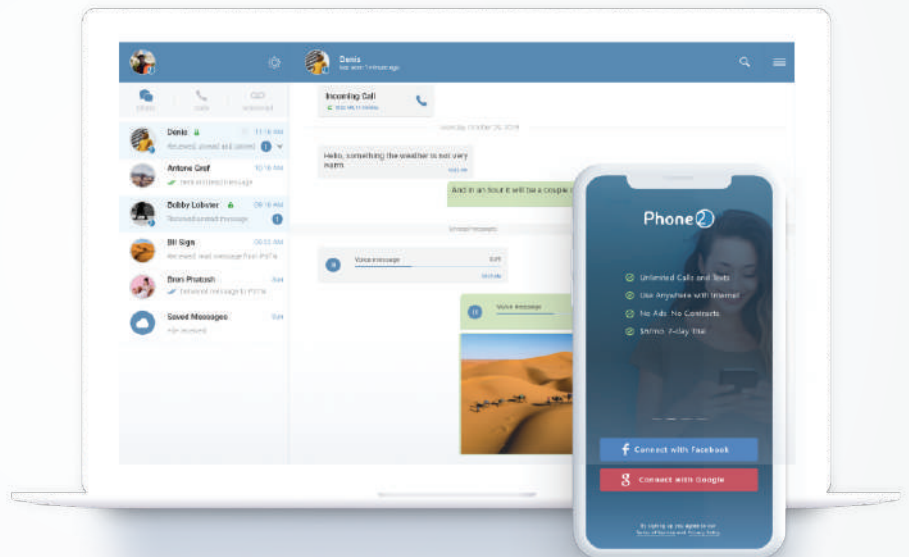
Credo360 is a place where you can safely deal with people you don't know

[www.credo360.com](http://www.credo360.com)

## Phone2

Phone2 is the cloud phone.  
Send and receive calls/texts anywhere  
with internet on a real phone number

<https://phone2.im>



**GBG**  
Insurance Without Borders™

Global Benefits Group (GBG) has been specializing in the international insurance market for more than 35 years.

[www.gb.com](http://www.gb.com)

# TOP FIVE REASONS CLIENTS LOVE US



1

## WE DON'T JUST WORK FOR YOU. WE WORK WITH YOU.

Whether you have a big IT department, a small one, or none at all, Nisman's team will come into your business, roll up our sleeves and become a part of YOUR team until all systems are go and the job is done. Our process is designed to maximize your resources and minimize your stress.

2

## A GREAT ORGANIZATION DESERVES A WINNING TEAM. NOT A PICK-UP TEAM.

Most companies don't realize that many IT consultancies work more like employment agencies, recruiting only once they have your contract. But at Nisman, our core team and hand-selected roster of carefully vetted professionals already have a stellar track record working with us on projects for companies like Illumina. When you hire Nisman, you can be sure you will get only trusted, top quality people who are a match for your challenges.

3

## REALIZING YOUR VISION TAKES MORE THAN A TECHNICIAN. IT TAKES AN ARCHITECT.

Nisman designers share your overall vision, and make it their mission. We architect systems and software from scratch, customize existing integrations for better performance, diagnose and correct deficiencies. The result is a robust overall foundation that is integrated well into existing infrastructure, and is designed to scale and adapt with your organization from the start, not as an afterthought.

4

## HUMAN CONNECTIVITY MATTERS MOST.

It may sound old-fashioned for a company in the innovation business...but relationships are our key driver. As a small boutique consultancy, we work more closely with our clients. And because your core components are people, we bring superior people skills and training along with our technology skills.

5

## OUR ONLY AGENDA IS YOURS.

Nisman Solutions is completely independent and vendor-agnostic. That's how we can choose from the widest array of technology available including proven and reliable open source options, make impartial recommendations and design design systems and solutions based solely on your needs, budget and expert judgment.



"Slava did a great job of taking my vague and poorly thought out requirements and turning them around into workable solution, including proposing new methods and getting them up and running. We use these tools on a daily basis"

– Chris MacDonald, Senior Engineer,  
Product Engineering at Illumina

**GET A FREE NO OBLIGATION ASSESSMENT OR CONSULTATION:**

**619-630-7528 / [contact@nismansolutions.com](mailto:contact@nismansolutions.com)**